

---



**comPPage**®

*On - Site Paging Systems*  
*Product Listing*

# CX5A

## FCC Narrow Band Compliant

- State of the art Uhf paging encoder/transmitter using industry standard POCSAG signaling
- Frequency – 446 - 466 Mhz, Narrow Band Compliant
- Approval  
FCC part 90 – UL

### Multi-Port Units

- Multi-Paging Protocols
  - **Comp 2, Comp1, Scope, Tap, Bosch, ESPA4.4.4.4**
- Accommodates 9,999 Pagers



# CX5A

---

- Reach an employee ANYWHERE on site
- Page an Individual or Groups
- Page by telephone - Voice Prompt
  - Send Numeric messages from the telephone keypad
  - Select one of 35 predefined Alphanumeric messages
  - Add Numeric message to predefined at time of selection
- Page from a Standalone or Network computer
  - Select an individual or a group
  - Send a pre-stored message or create a custom
  - Select Alphanumeric or Numeric pagers

# CX5A

---

- Connect to Other devices using the Voltage Free Contacts
  - 8 Voltage Free Contacts
  - Each Contact programmable with a different message
  - Programmable for N/O, N/C or C/S
  - Programmable Trigger Times and Repeats
- Multiple Serial ports
  - 3 9-Pin RS232 Ports, 1-USB Port, Ethernet (UDP)
  - Telephone I/F - Voice Prompts



# Personal Alarm Pendant Transmitter

- Push Button Alarm
- Neck Cord Alarm
- Low Battery Alarm
- Motion Sensor Option
- Rugged and Waterproof
- Programmable Frequency
  - 430 – 470 MHz
  - 12.5KHz @ 2.5KHz Deviation



# comPPage®<sup>®</sup>, Inc

## Wireless Unit – Bath/Bed Station

***Staff-Links***®

Push-Button Call cord

Pull Cord Bath Call

Help Button Call

Cancel Button

Staff Call Button

Low Battery Alert

Optional Test Call



Frequency – 433 – 470 Mhz,  
Channel Spacing 12.5Khz @ 2.5Khz deviation  
Transmit Direct to Pagers or Receiver

# comPPage<sup>®</sup>, Inc.

## Wireless Unit 2-Button

---

Rugged, Ergonomically designed casing

Water resistant

2 Trigger Zones

Frequency Programmable 430 Mhz – 460 Mhz

Low Power “Sleep Mode”

Current - <50mA @10mW

Internal Battery – 9.0v



# comPPage<sup>®</sup>, Inc.

## Wireless Unit – Door/Window

---

Rugged, Ergonomically designed casing

Water resistant

4 Trigger Zones

Frequency Programmable

Test Call Function

Low Power “Sleep Mode”

Internal Battery – 9.0v

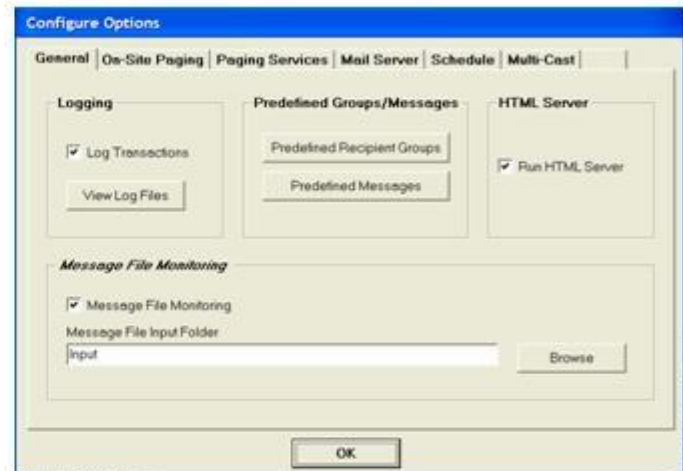
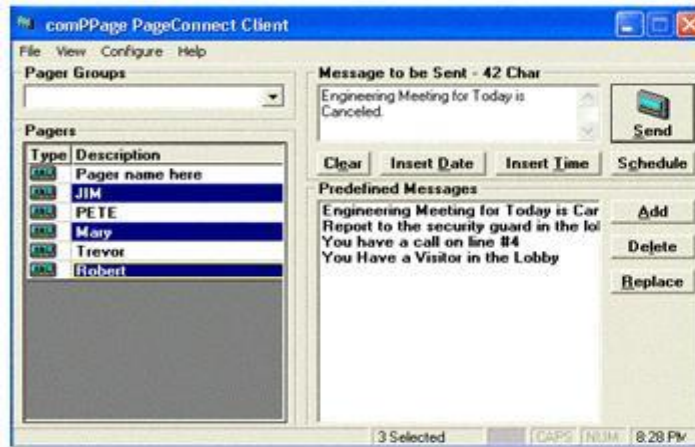
Current - <50mA @10mW





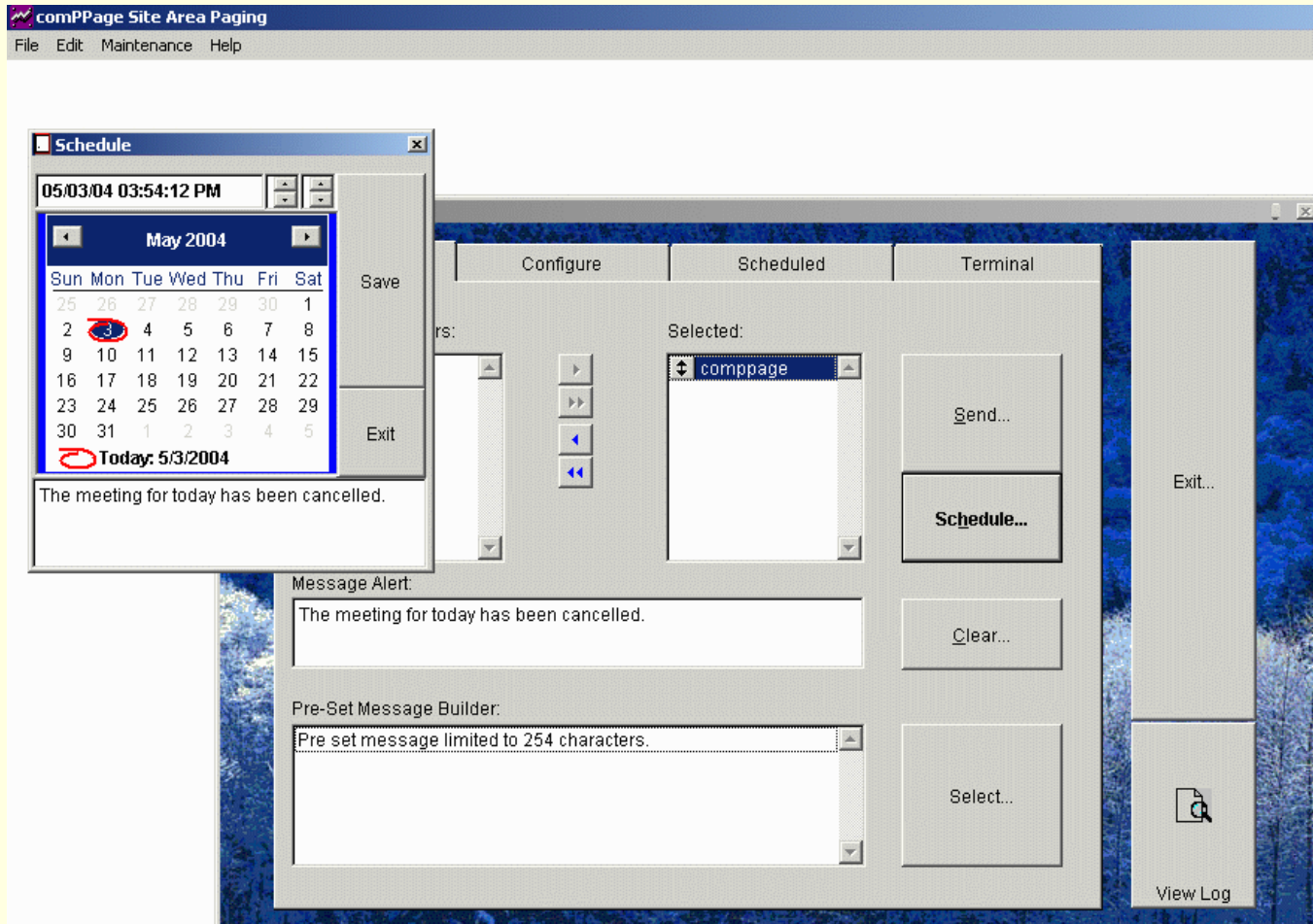
# comPPage® Inc.

## comPPage Page Connect Server Software PC Network Paging



Unlimited Clients - Scheduling of Pages - Multi-Cast for IP Paging  
Email and SMS Texting - Web Browser Paging – Pre-Set Messages

# comPPage® Qlinks Single User PC Paging Software



# comPPage<sup>®</sup>, Inc

## PIA Enterprise System

---

**UL 1069 - CSA C22.2#205 - FCC – CFR 47, Part 15 - RoHS Compliant**

**Wireless or Wired Local Area Network**



**Enterprise SQL Database  
Controller**

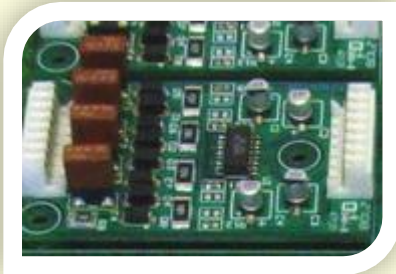
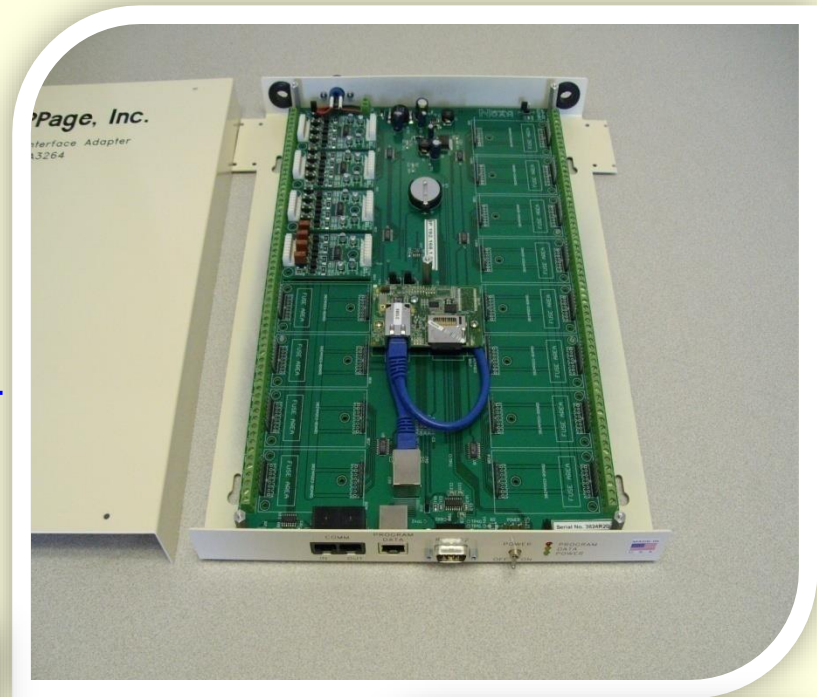
- Windows 10 Pro (64-Bit)
- Wireless LAN 802 b/g/n
- Intel Celeron N2930 1.83GHz Quad Core Processor
- 8-GB PC3-8500 Memory
- 256Gb SSD SATA 6.0Gb/s
- 6 USB Ports
- 4 rs232 Ports
- Fanless

# comPPage<sup>®</sup>, Inc

## Paging Interface Adapter



PIA



# comPPage<sup>®</sup>, Inc

## PIA Enterprise System

---

- Unlimited number of Units can be attached to the Controller.
  - AiPhone – Cornell – Engineered Electronics - Heritage MedCall
  - Tektone Sound + Signaling and Most Alarm Panels
  - Connect via **Ethernet, RS485 or Wireless**
- RS232 Inbound Data from Fire Alarm Panels, NC Systems
- Display Alerts on **ALL Monitors** on the network
- 8 levels of Escalations – Individually programmable
- Additional Identifiers
  - Building, Floor, Wing, Room, Bed, and Call type
- Multiple paging outputs at one time.
  - IP Address UDP (Scope Tx only) and Up to 8 TCP/IP Units
  - RS232 – Email – SMS Texting
  - Smart Device
  - Display Alerts on HD TV

# comPPage<sup>®</sup>, Inc

# Paging Interface Adapter

---

- 64 Contact Inputs per PIA
- Fused Non Voltage Inputs
- Voltage or Non-Voltage Host
- AC or DC Input
- Slow and Fast Pulse
- 5-50 Volts Input

## Reports

- Create and Print Custom Reports
- At Controller
- Local PCs
- Alert Times shown in [Average](#) and [Elapsed Time](#)



# comPPage® Inc

# PIA Enterprise System

## Zone Programming Screen

Zone - 1 of Unit - 00:90:C2:D1:69:8F on Server - 1

**Location**

Wing Number: EAST Room Number: 100

Floor Number: 1 Bed Number: A

**Control Info**

Connection Type: Voltage Alert-High

Repeat Interval: 2 Minutes

Repeat Count: (None)

**Messages**

Active: BED CALL ROOM 100

Reset: ROOM 100 RESET

Slow Pulse:  BATH CALL ROOM 100

Fast Pulse:  EMERGENCY CALL ROOM 100

**Escalation Settings**

	Interval		Interval
First: <input checked="" type="checkbox"/>	20 Minutes	Fifth: <input type="checkbox"/>	2 Minutes
Second: <input type="checkbox"/>	2 Minutes	Sixth: <input type="checkbox"/>	2 Minutes
Third: <input type="checkbox"/>	2 Minutes	Seventh: <input type="checkbox"/>	2 Minutes
Fourth: <input type="checkbox"/>	2 Minutes	Eighth: <input type="checkbox"/>	2 Minutes

**Notification Settings**

Edit

**Overrides**

Suppress Reset Message:

Type of NC

Time Between output

Bed Cord

Reset for All Calls on this Contact

Slow Pulse

Fast Pulse

Escalation Selection

# comPPage<sup>®</sup>, Inc

## PIA Enterprise System-Reports

### Alert Notification Report

Report Date: 3/28/2011  
 Location: Happy Valley Retirement

Bldg	Wing	Floor	Room	Bed	Alarm Message	Activated	Reset	Response Time
<b>3/24/2011</b>								
SOUTH	EAST	6	500		Bath Call Room 500	9:00:05 AM	09:00:17 AM	00:00:12
SOUTH	EAST	6	500		Bath Call Room 500	10:33:07 AM	10:34:55 AM	00:01:48
SOUTH	EAST	6	500		Emergency Call Room 500	10:35:01 AM	10:36:22 AM	00:01:21
SOUTH	EAST	6	500		Emergency Call Room 500	10:36:42 AM	10:37:16 AM	00:00:34
SOUTH	EAST	6	500		Bath Call Room 500	10:37:19 AM	10:38:40 AM	00:01:21
SOUTH	EAST	6	500		Emergency Call Room 500	10:40:27 AM	10:40:55 AM	00:00:28
SOUTH	EAST	6	500		Code Blue Call Room 500	10:41:26 AM	10:41:39 AM	00:00:13
SOUTH	EAST	6	500		Code Call Room 500	10:42:38 AM	10:43:36 AM	00:00:58
SOUTH	EAST	6	500		Code Call Room 500	12:36:44 PM	12:36:55 PM	00:00:11
Total Calls:						9	Average: 00:00:47	
SOUTH	EAST	6	501		Bed Call Room 501	8:57:35 AM	08:57:47 AM	00:00:12
SOUTH	EAST	6	501		Bed Call Room 501	10:35:08 AM	10:36:23 AM	00:01:15
SOUTH	EAST	6	501		Bed Call Room 501	10:36:42 AM	10:38:41 AM	00:01:59
SOUTH	EAST	6	501		Bed Call Room 501	10:42:49 AM	10:43:13 AM	00:00:24
SOUTH	EAST	6	501		Bath Call Room 501	10:43:23 AM	10:43:36 AM	00:00:13
Total Calls:						5	Average: 00:00:48	
<b>3/25/2011</b>								
SOUTH	EAST	6	500	A	Bed CallRoom 500A	5:53:51 AM	05:54:07 AM	00:00:16
SOUTH	EAST	6	500	A	Bed CallRoom 500A	7:17:02 AM	07:17:15 AM	00:00:13
SOUTH	EAST	6	500	A	Bath Call Room 500	7:17:24 AM	07:17:33 AM	00:00:09
SOUTH	EAST	6	500	B	Bed CallRoom 500B	7:17:47 AM	07:17:54 AM	00:00:07
SOUTH	EAST	6	500	B	Bed CallRoom 500B	8:50:22 AM	08:50:33 AM	00:00:11
SOUTH	EAST	6	500	A	Bed CallRoom 500A	9:03:23 AM	09:03:29 AM	00:00:06
Total Calls:						6	Average: 00:00:10	

**Report Filters**

- [-] Filters
  - [-] Building
    - From : 12
    - To : 12
  - [-] Date
    - From : 06/03/2011 12:00:00 AM
    - To : 06/09/2011 02:18:34 PM
  - [-] Floor
    - From : 7
    - To : 7
  - [-] Notification Type
    - Slow Pulse
  - [-] Response Time
    - > 00:00:05
  - [-] Room
    - From : 700
    - To : 710
  - [-] Wing
    - From : North
    - To : North

Notification Type

Add

Edit

Remove

Remove ALL

OK



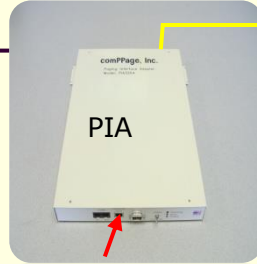
# Enterprise System

- iPhone
- Cornell
- Heritage Medcall

- Engineered Electronics
- Tektone Sound + Signal

- Btn Alert
- Cord Alert
- Fall Alert
- Test Call
- Low battery

457 Mhz



Network Connection



**Router**

- Internet Connection
- SMS Texting
- Emailing



**IP Paging**



**Controller**

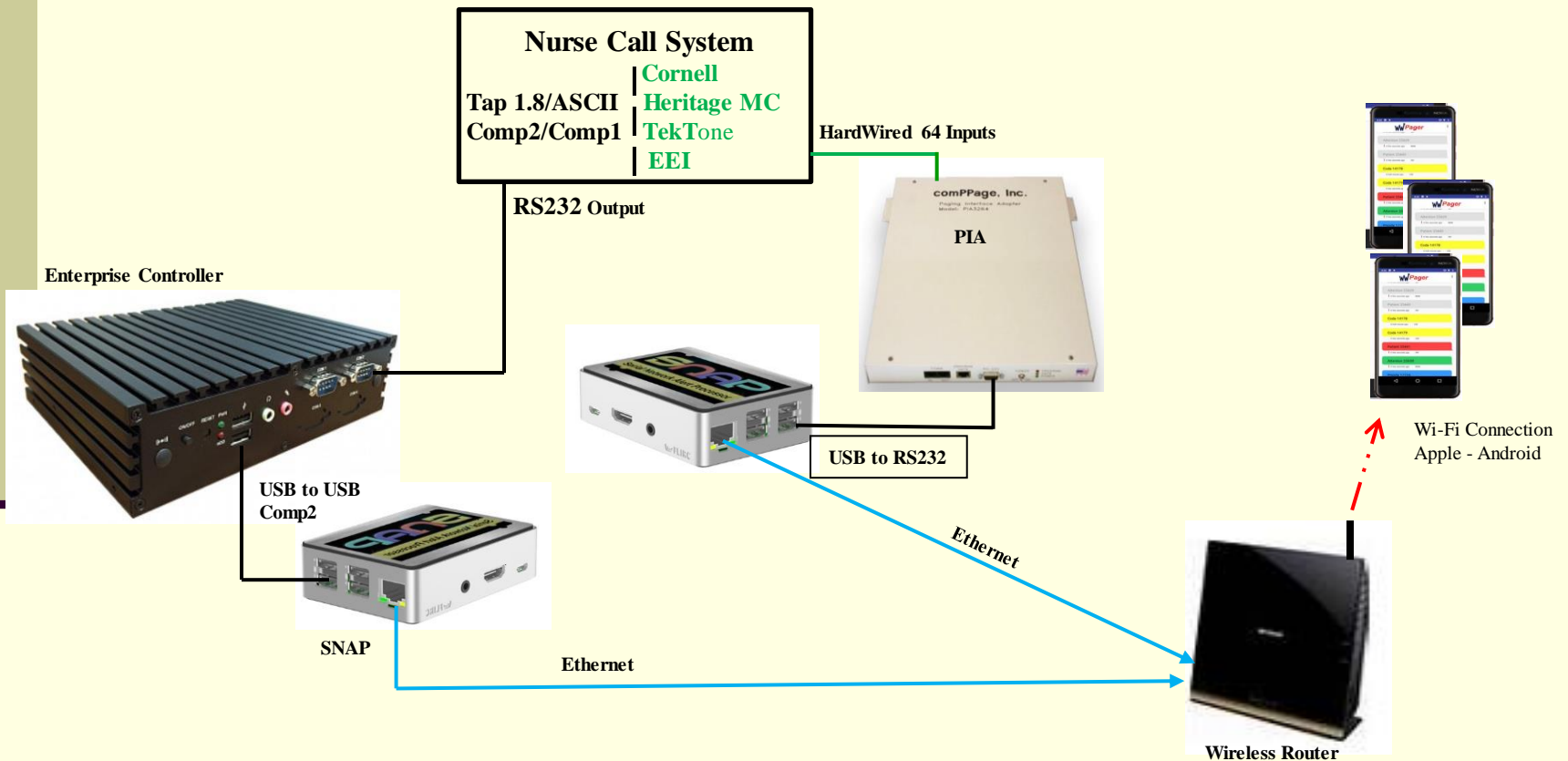


Remote Monitoring of Alerts on any hardwired or wireless Network Station

Alert Notification Report									
Custom Reports									
Report Date:		3/28/2011							
Location:		Happy Valley Retirement							
Bldg	Wing	Floor	Room	Bed	Alarm Message	Activated	Reset	Response Time	
3/25/2011									
SOUTH	EAST	6	500	A	Bed Call Room 500A	5:53:51 AM	05:54:07 AM	00:00:16	
SOUTH	EAST	6	500	A	Bed Call Room 500A	7:17:02 AM	07:17:15 AM	00:00:13	
SOUTH	EAST	6	500	A	Bath Call Room 500	7:17:24 AM	07:17:33 AM	00:00:09	
SOUTH	EAST	6	500	A	Bed Call Room 500A	9:03:23 AM	09:03:29 AM	00:00:06	
Total Calls:						4	Average: 00:00:11		

# Enterprise System

## SERIAL NETWORK ALERT PROCESSOR



# comPPage<sup>®</sup>, Inc

## DVIF10

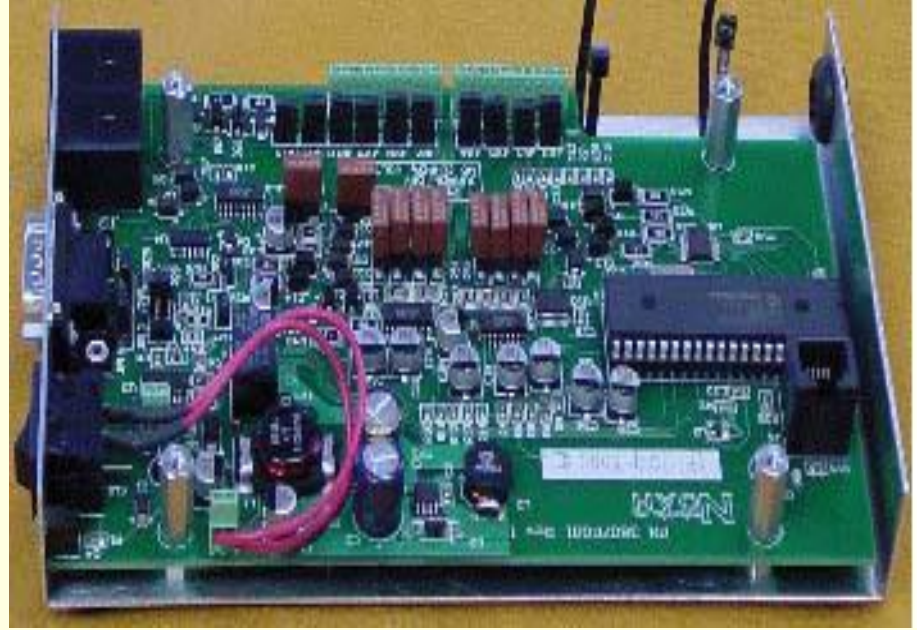
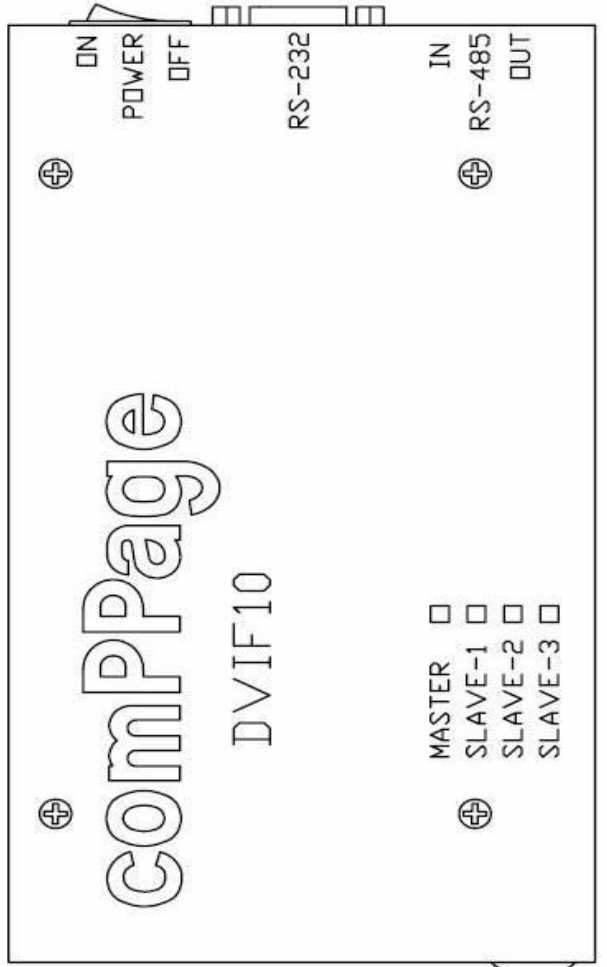
---

### Dry or Voltage Interface

- ▶ 10 Programmable Inputs
- ▶ Dry or Voltage 1-24 Volts AC/DC
- ▶ Paging Protocol output
  - Scope or Comp2
- ▶ Attach up to 3 Slaves for a total of 40 Inputs
- ▶ Multiple Repeats and Selectable Intervals
- ▶ Each Contact can be sent to a different Pager or Group

# comPPage<sup>®</sup>, Inc

## DVIF10





# Digilink Uhf

- Two Version
  - 10 Zones and 5 Zones
- FCC Approved part 90
- Frequency – 457.525 or 457.550 Mhz
- Serially Programmable with USB Cable
- Voltage or Voltage Free input
- Alphanumeric or Numeric Paging
- 12VDC Required



# Digilink Uhf

---

- Program for N/O, N/C, or C/S
- Each Contact can page a different pager
- RF Transmission to pager at 1200 or 512 Baud
- Open Collector Output available to drive a siren or other device
- Only 200  $\mu$ a current draw in standby
- Tamper and Test Calls available
- Trigger times and repeats are programmable



# Xlite Transcoder

- Lite version of the ConneXions II unit
- Power by 12 Volts DC from a 115VC-Wall adapter
- 100 Characters per transmission
- Multi Protocols – Auto Sensing
  - COMP2 - SCOPE
- 9,999 Cap Code Capacity
- FCC Approved part 90
- Frequency – 450 – 470 Mhz
- 1-watt RF Output



# **scope** RX10 POCSAG Receiver



- Serial output POCSAG receiver
- 10 Form C Relays Individually controlled by Cap Codes
- 512/1200 Baud Rate
- Cap code range selectable
- Unique and Group ID
- Data only function
- 12v or AC adapter
- 9600 baud N-8-1 out
- Log to PC using comPPage® Logging and Reporting Software
- Manual Reset at Unit or OTA
- Indicator Lamp for Each Relay



# comPPage<sup>®</sup>, Inc. Relay Control System



# Relay Control System

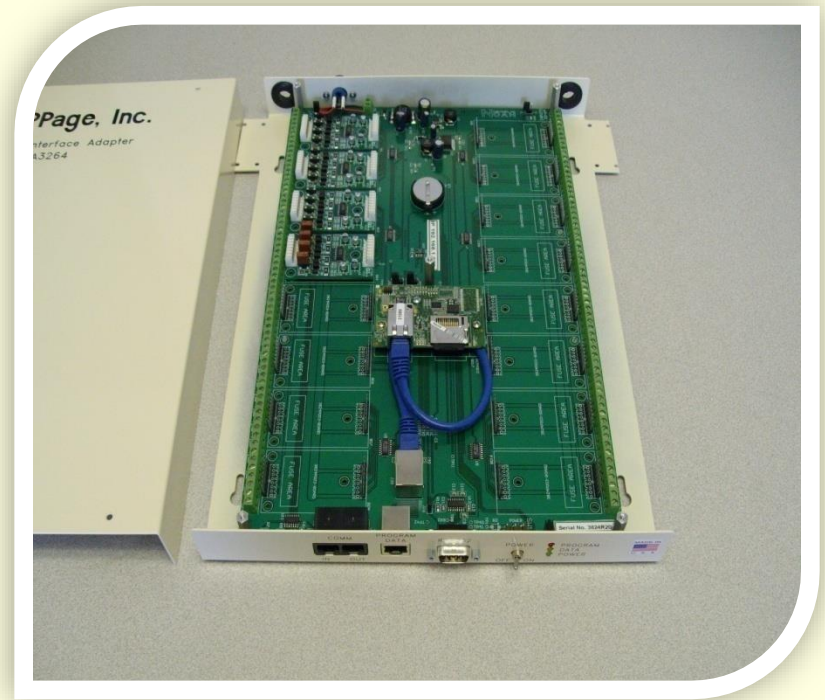
## ■ Relay Control System – 27 or 54 outputs

- 25 / 54 Form C Relay output N/O, N/C
- 2 AC Relays
- Serial Input or Wireless Input
- 24VDC, 12.5 Amp Power Supply
- Control Software Provided
- Activate by Serial Command, Cap Code, Key Word
- Latching or Momentary, Open or Closed
- UHF POCSAG Receiver can be installed



# comPPage<sup>®</sup>, Inc

## Paging Interface Adapter



- **Interface with Hardwired NC Systems**
- **Master and 7 Slaves**
- **RS485 or Ethernet Connection**
- **Multi- Paging Protocols**
- **Reports**



# GEO40A9 2 Line Synth Alpha Pager

- GEO40A9 Alpha Pager
- 40 Character Display
- 8 Addresses (cap codes)
- 239 Character Per Message
- 10,000 Character Storage
- Powered by 1 AAA battery
- Size
  - 76mm x 53mm x 17mm
- OTA (over the air) Function
  - Turn Off
  - Erase Memory
- Hand Programmable



Frequency  
M – 454-460 Mhz  
N – 462-466 Mhz

# 929HQ 2/4 Line Zoom Pager

- Bright Blue Back Light
  - Turn On When Message Received
- Synthesized 450 – 470 MHz
- Manually Programmable
- 8 Addresses
- 28,000 Plus Character storage
- 2 Line – 42 Characters on screen
- 4 Line – 84 Characters on Screen
- 3(l)In x 2(w)In x .175(d)In
- 1 x AA alkaline battery
- One Button Operation
  - On/Off
  - Read Message
  - Delete Message



# 990 Pilot 4 Line Alpha Pager

## ◆ 990 Pilot

- 4 Line Large Display
- Bright Blue Back Light
- Hand Programmable
- 452- 460 & 460 – 470 Mhz
- Single Button Operation



# TP161 Desktop Pager

- ▶ Easy-to-Read oversize screen  
4-3/4" Wide by 1-3/4" Tall
- ▶ BNC Antenna Input
- ▶ Built-In Relay
- ▶ Characters 1/2" Tall
- ▶ Oversize 4 Line Display
- ▶ Data and Relay output port
- ▶ Frequency: 450-460Mhz  
460-470Mhz





# Digital Alert Viewer Paging

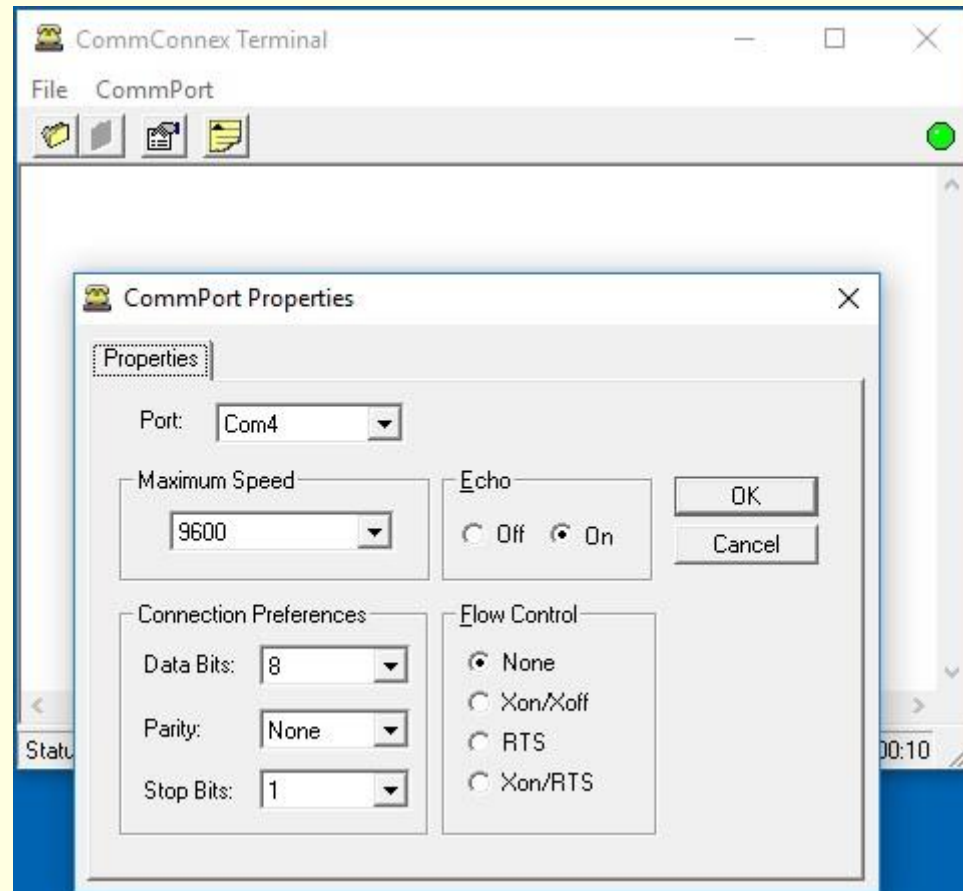


- ▶ **Display Alerts on HD TV**
- ▶ **Option of 9 different Colors**
- ▶ 7 Cap Codes Available
- ▶ Use on any POCSAG Transmitter
- ▶ Frequencies – 456-459, 464-467
- ▶ Connect via HDMI cable





# Terminal Software



# comPPage

**3900 Woodlake Blvd.  
Suite #208  
Greenacres, Florida 33463  
(877) 969-6976  
[sales@comppage.com](mailto:sales@comppage.com)**