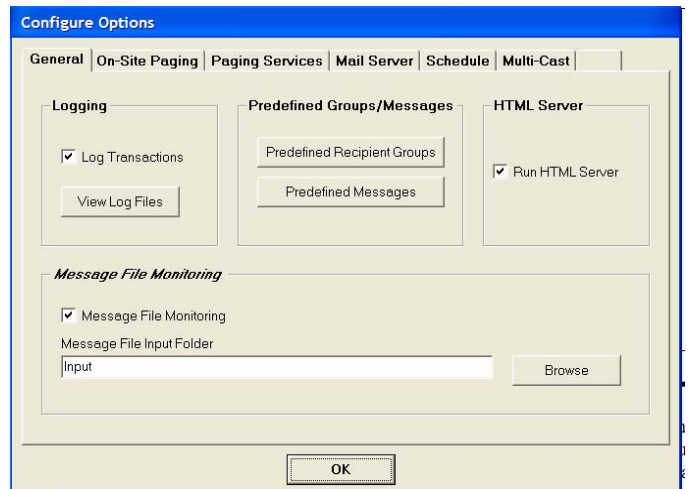
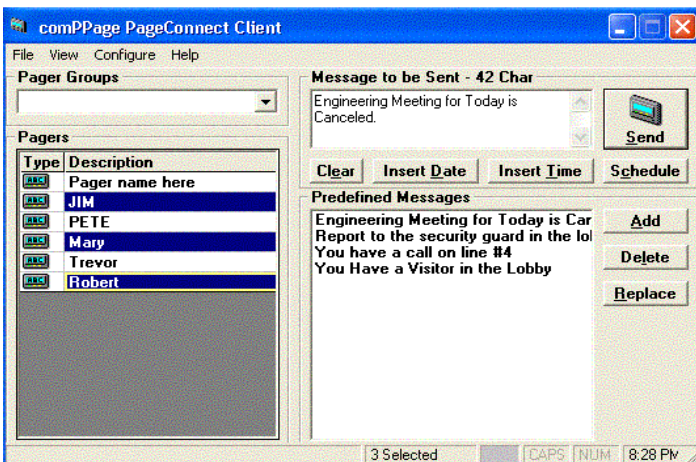
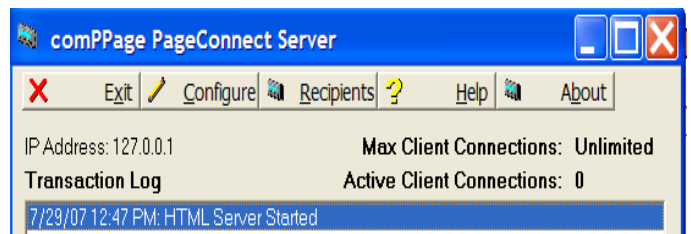




# CPPCS

## *comPPage PageConnect Network PC & Web Browser Paging Software*

### **On-Site / Off-Site / Email / Cellular Telephone Text Messaging / Multi-Cast on LAN**



comPPage's PageConnect Server and Client (CPPCS) PC and Web Browser paging software is rich with features other programs do not have. Pages can be made from any PC on the Local Area Network using the comPPage PageConnect Client software or simply use the Internet Browser installed on your machine. You can send custom text messages to staff on-site or to an outside provider via the internet to a wide area Pager. Use the email function to send the same custom message to a staff member that does not have a paging receiver.

comPPage, Inc. provides paging software that is fully compatible with Microsoft™ Windows W2K, XP-Pro and Vista. comPPage Network PageConnect Server Software can be integrated with other applications to provide a complete paging software solution.

## FEATURES

- ◆ Page from workstation with Client software
- ◆ Page from workstation using the Internet Browser
- ◆ Sent custom text messages
  - On-Site Paging Receiver
  - Email
  - Text Message to Cellular Telephone
  - Off-Site Wide Area Paging Receiver via Internet
  - Multiple transmitters over Local Area Network
  - Internet Browser, Password Protected

The screenshot shows the 'comPPage PageConnect Client' window. At the top, it says 'Select one or more pagers, edit a message, then press SEND'. Below this are two main sections: 'Pagers' and 'Message to Send'. The 'Pagers' section has a list box containing 'Pager name here', 'Pager 1', 'Group Call', 'Group Call 2', 'Pager 5', and 'Pager 6'. Below the list is a 'Groups' section with 'Main' and 'Main 2' and a 'Load Group' button. The 'Message to Send' section has a text area containing 'Come to the front desk', a 'Send' button, and a 'Clear' button. Below the text area are 'Predefined Messages', 'Time', and 'Date' sections. The 'Predefined Messages' section has a dropdown menu with 'Come to the front desk' selected. The 'Time' and 'Date' sections have input fields.

The screenshot shows the 'comPPage PageConnect Client' window for logging in. It says 'Please log in' at the top. Below this are two input fields: 'User ID' and 'Password'. Each field has a 'Send' button next to it.

- ◆ Automatic paging from pre-set schedule
- ◆ Pages Alphanumeric, Numeric, or Tone Only pagers
- ◆ Background paging
- ◆ Pagers can be placed in 1-8 individual Books
- ◆ Unlimited Groups from Server or Client
- ◆ Unlimited Clients
- ◆ Send Signature, Date and Time with page (Option)
- ◆ Pager Password Protected (Option)
- ◆ Paging Protocol
  - Scope
  - TAP V1.8
  - Comp2
  - Comp1
- ◆ Log All Pages
- ◆ Use Pre-Defined custom messages from Server or Client